



دار لتصميم الخشب ذ.م.م

DAR WOOD DESIGN W.L.L.

An ISO 9001 certified company



Managing Director's Message



Amit Verma,
MBA, PMP, Lean (P&G)

“Ethics is an integral part of the Dar Wood Design W.L.L culture. With years of customer integrity under its belt, Dar Wood Design W.L.L. has earned a well-respected reputation, most professionally run organization in its industry. Through shared vision and solid teamwork, Dar Wood Design W.L.L. has created an exceptional place to work and more importantly a solid foundation as a company that can be trusted by all stakeholders.

Today, we are proud and delighted that we have truly accomplished this together, as a team and at every level, by always conducting our business honestly and ethically. Dar Wood Design W.L.L will continually strive to integrate practices with our goal of rewarding careers, building individual character, and growing a respective and profitable business. We continue a long working philosophy of respecting our employees, considering them as the most valuable asset of the organization while respecting our commitments to our customers by meeting and exceeding their expectations.

What we envisioned has turned into a reality! We faced several challenges and risks with our urge to grow, develop and be known to the market. This has been the spirit in which we dare to outgrow the promising opportunity in the region. We had made it in achieving what we are today. We continue to strive to innovate interior designing and joinery at it's grandeur.



Interior Design And Turnkey Solutions for Hotels & Resorts



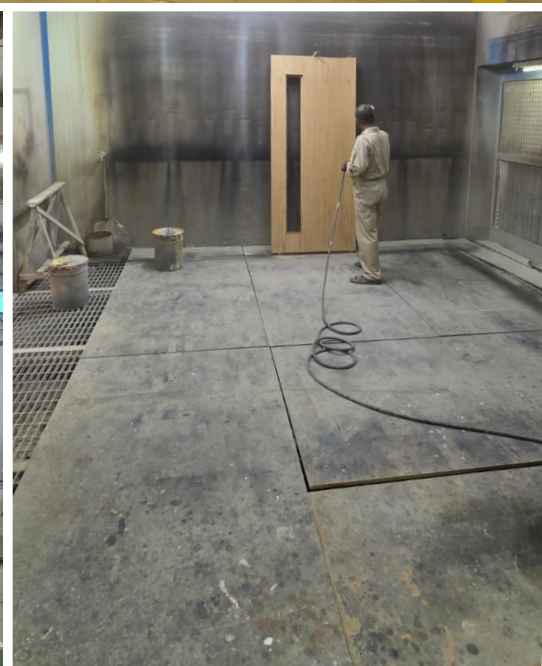
Through shared vision and solid teamwork, Dar Wood Design W.L.L. has created exceptional spaces for the hospitality industry, including our latest achievement - Hawar Resort

- Specializing in custom-designed furniture and fit-outs for hotels, resorts, and restaurants.
- Providing total turnkey solutions that meet and exceed customer expectations.
- Innovating interior design and joinery with a commitment to ethics, quality and excellence.

Amit Verma,
MBA, PMP, Lean (P&G)

OUR FACILITY





OUR APPROACH

Adapting global trends in ergonomics and interior design we work with lifestyle industry experts to develop better home, work and commercial environment:

LIFESTYLE

(RETAIL & COMMERCIAL)

A vibrant, inviting and evocative experience is what visitors to any retail or commercial outlet expect. We live up to the expectations of discerning clients by creating aweinspiring and customerfriendly fit outs that bring life to the merchandise.



LIFESTYLE

(RESTAURANTS AND HOTELS)

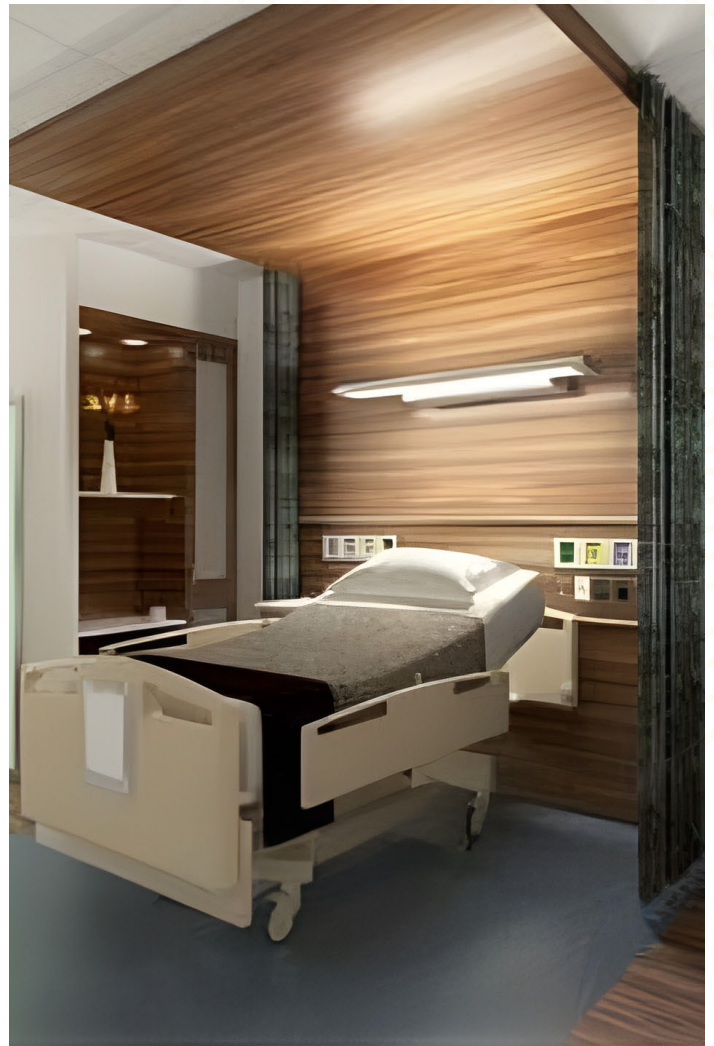
The hospitality industry is witnessing a dynamic surge with business and boutique hotels and restaurants striving to meet the demanding needs of discerning clientele. We provide total turnkey solutions for the hospitality industry with customdesigned furniture and fit outs.



LIFESTYLE

(HOSPITALS AND CLINICS)

The healthcare industry is one of the most challenging sectors seeking to create a patient friendly and wellness oriented center. We work with industry leaders to provide furniture and fitouts that adhere to international healthcare standards and provide warmth and wellbeing to caregivers and patients.



OPERATIONS



Cutting Lists and Optimization using Beam Saw: The Biesse range of cutting centres is designed to satisfy the needs of small to medium-sized enterprises. It is easy to use, has advanced technical solutions, enabling companies maintain high quality standards whilst offering product customisation with quick and defined delivery times.

Carpentry and Joinery: Carpentry and joinery involves carrying out advanced skilled work, primarily using timber products manufactured with utmost care and precision using skilled workers and accurate machining



CNC MACHINING: This machine ensures precision of workmanship in order to achieve perfect product finishing. More than one work piece can be processed at the same time, increasing productivity and delivery optimal results



Painting: We have state of the art painting booths with skilled painting professionals geared to deliver high quality output adhering to all environmentally friendly regulations.



APPROVAL PROCESS



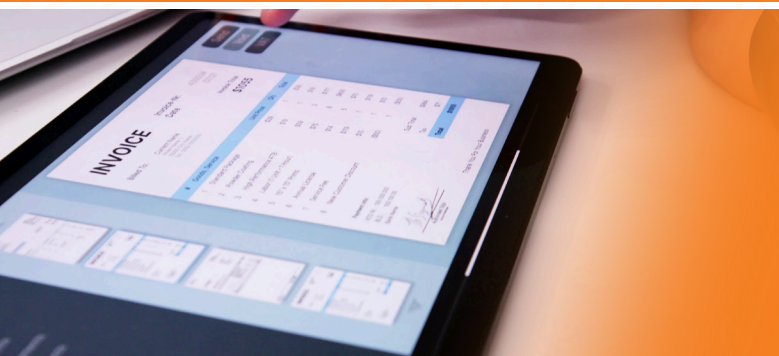
Shop Drawings: We have our own design team to make technical Cadd shop drawings and 3D Designs which include technical specification of the product.

Samples: Mock up samples are manufactured based on the client requirement which is also a part of our approval process.



Civil Defence Certification: Our products are fully compliant with Bahrain Civil Defence standards ensuring adherence to all fire and safety norms.

Approvals: We assist our clients in obtaining all necessary approvals from both Consultants and Government authorities



Payments: Our terms of payments are either full payments or progressive billing depending on the size of the project

QUALITY CONTROL



Material Selection: To ensure good quality, we have a reliable selection process when it comes to purchasing our raw materials. Our engineers check for defects and moisture level in every raw material before manufacturing.

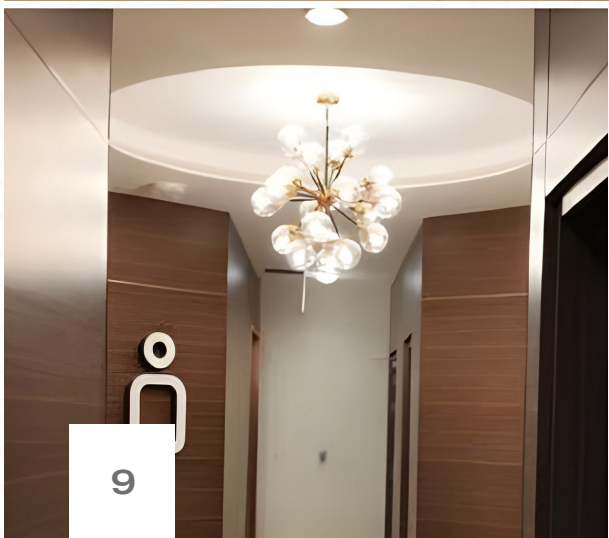


Manufacturing: We use one of the top quality standard process for manufacturing , to ensure best results and the best quality products



Warranty: We provide our clients with one year warranty for all manufactured products . For ironmongeries, warranty can range from three to five years based on selected brands

DISCERNING CLIENTS & PROJECT TESTIMONIALS



DISCERNING CLIENTS &
PROJECT TESTIMONIALS

Hawar Resort

BY MANTIS

HAWAR RESORT BY MANTIS, AN ECO-LUXURY DESTINATION LOCATED ON SAUDI ARABIA'S UNESCO-RECOGNISED HAWAR ISLAND, OPENED IN JANUARY 2025 AND BLENDS SUSTAINABILITY WITH CULTURAL HERITAGE AND CONTEMPORARY SOPHISTICATION.



DISCERNING CLIENTS &
PROJECT TESTIMONIALS



DISCERNING CLIENTS & PROJECT TESTIMONIALS



DISCERNING CLIENTS & PROJECT TESTIMONIALS



DISCERNING CLIENTS & PROJECT TESTIMONIALS



DISCERNING CLIENTS & PROJECT TESTIMONIALS



DISCERNING CLIENTS & PROJECT TESTIMONIALS



DISCERNING CLIENTS & PROJECT TESTIMONIALS



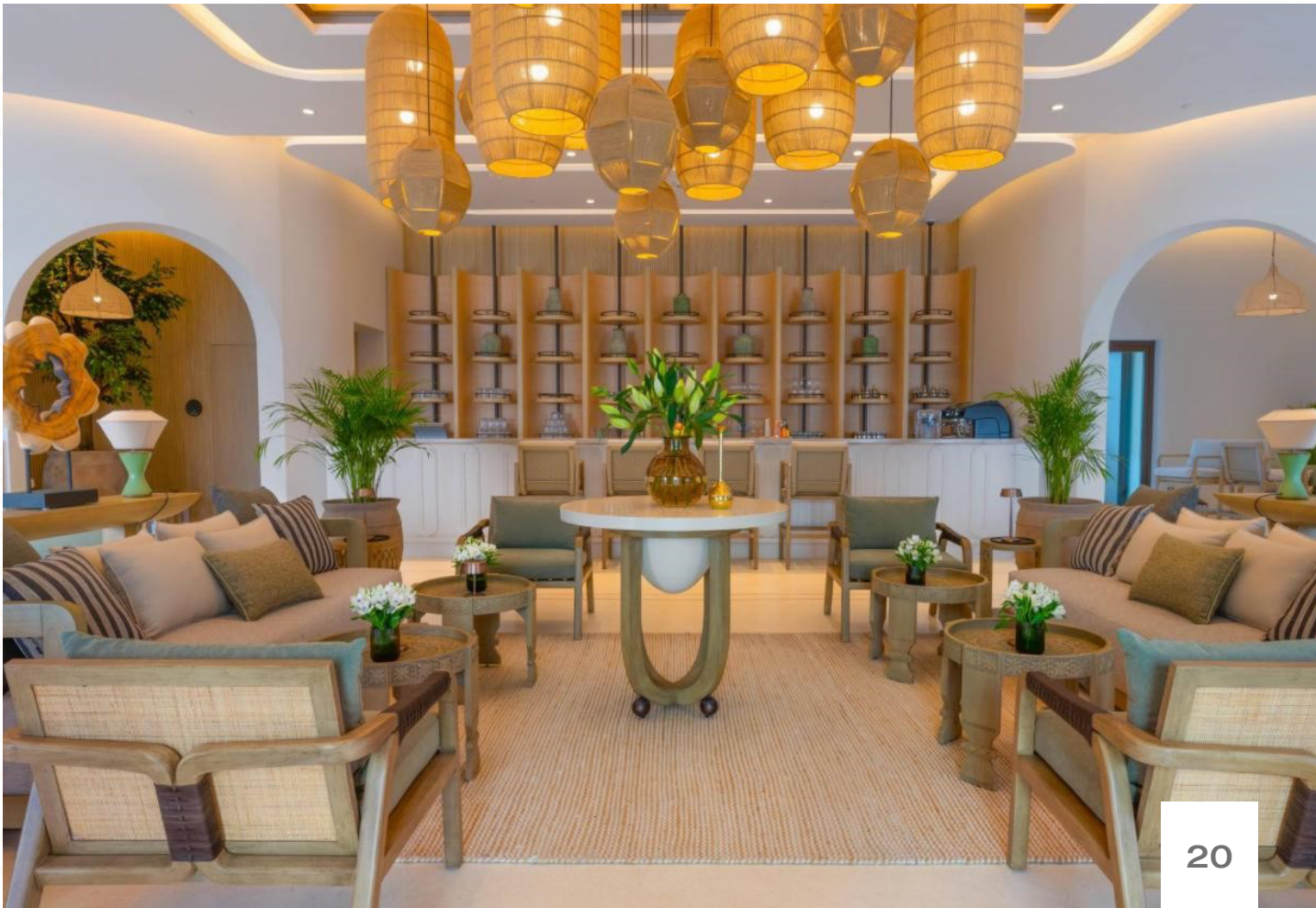
DISCERNING CLIENTS & PROJECT TESTIMONIALS



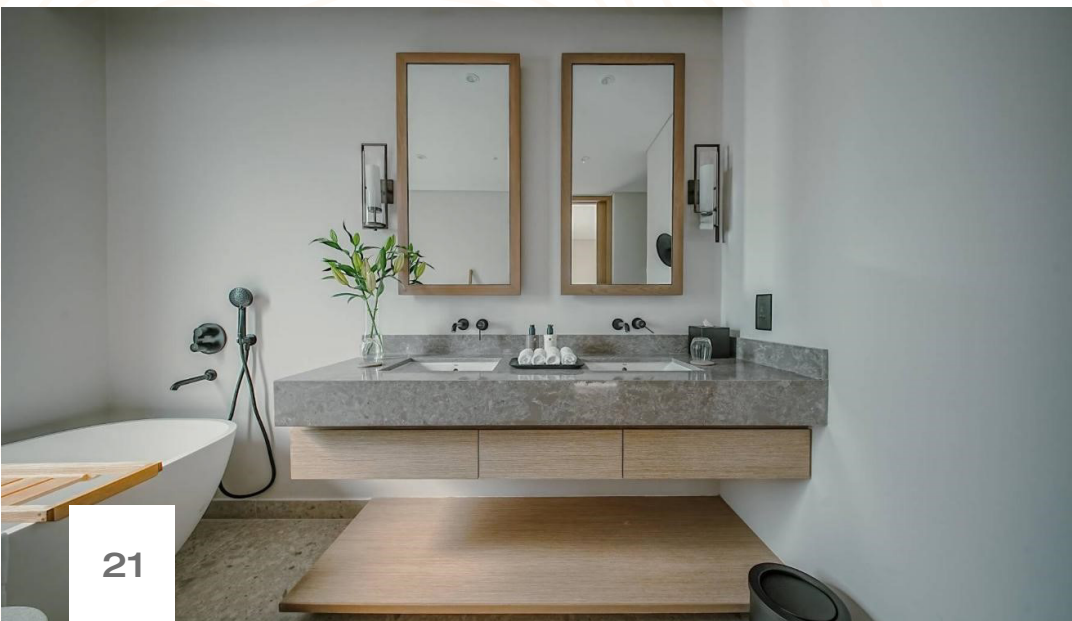
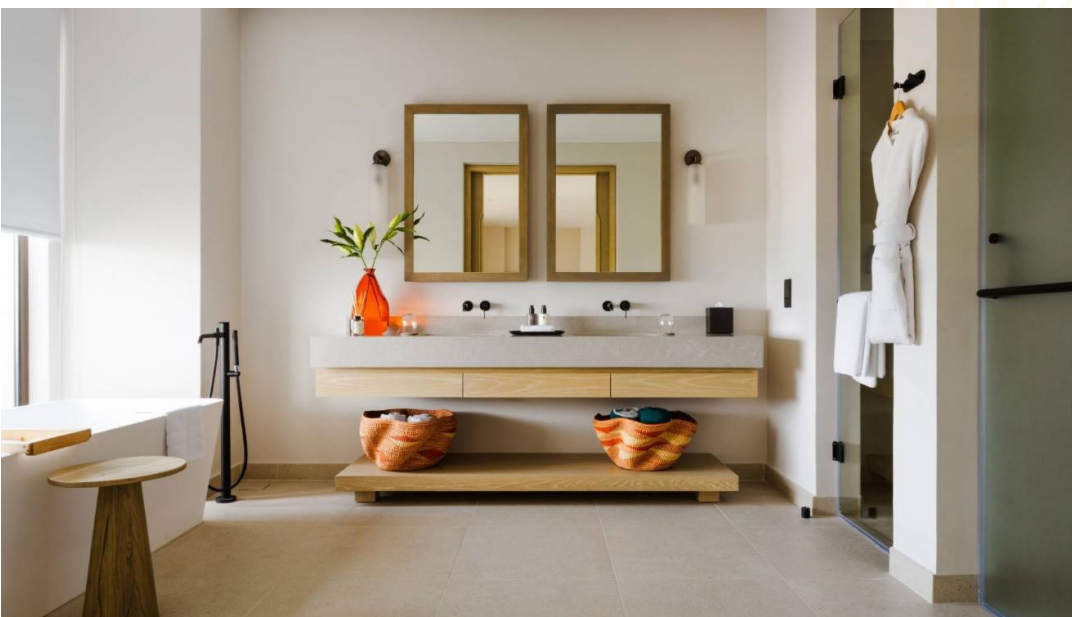
DISCERNING CLIENTS & PROJECT TESTIMONIALS



DISCERNING CLIENTS & PROJECT TESTIMONIALS



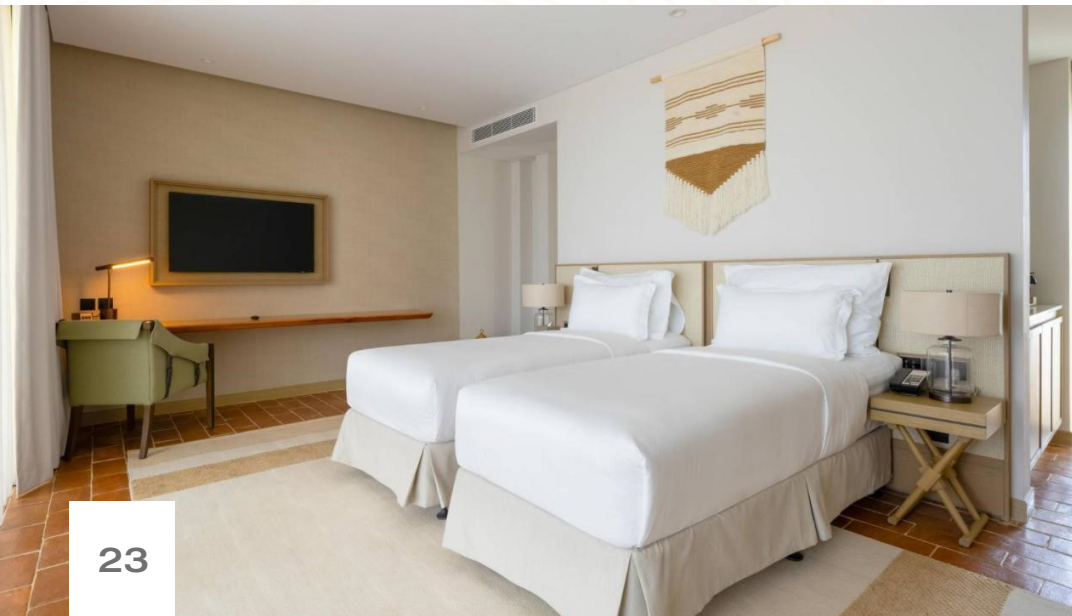
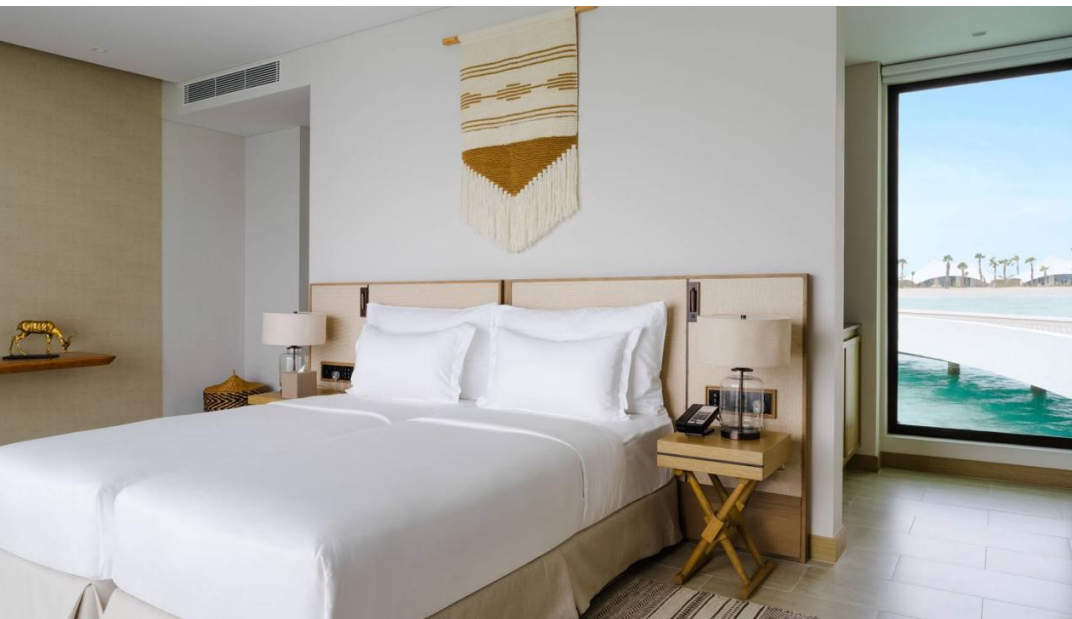
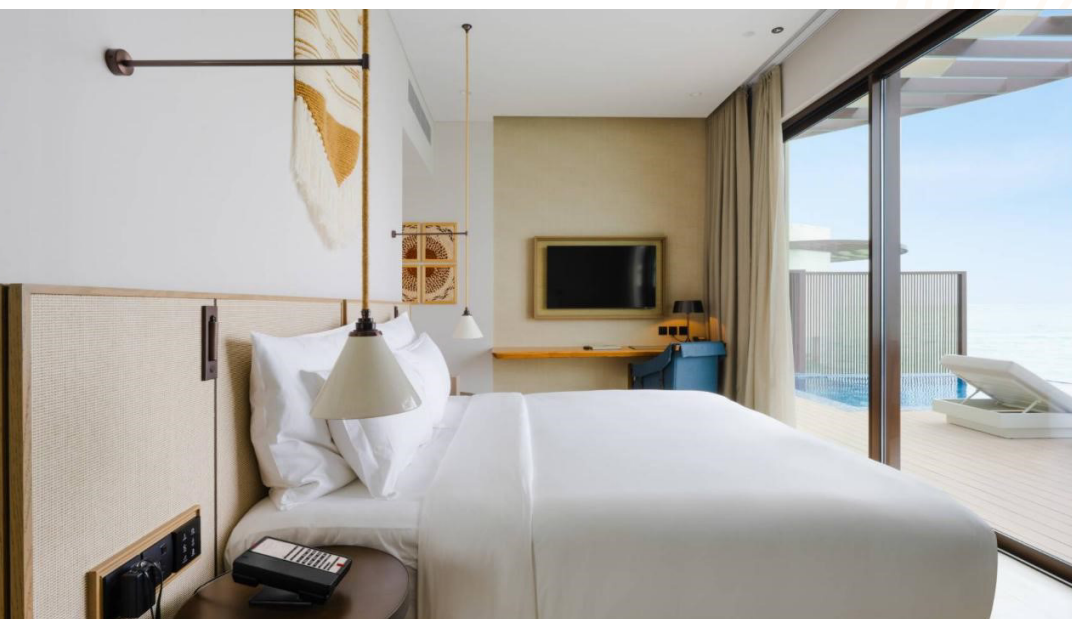
DISCERNING CLIENTS & PROJECT TESTIMONIALS



DISCERNING CLIENTS & PROJECT TESTIMONIALS



DISCERNING CLIENTS & PROJECT TESTIMONIALS



COMPLETED PROJECT

Hawar Hotel Development- Phase 1- Hawar Islands- Completed- December 2024

Client – Bareeq Al Retaj Real Estate Services
Main Contractor – Nass Contracting Company W.L.L
Cost Consultant – HAJ Quantity Surveyors Co. W.L.L
Engineering Consultant – Gulf House Engineering (GHE)
ID Consultant – International Design Associates (IDA)

Hawar Hotel Development- Phase 2 Hawar Islands- Completed- December 2024

Client – Bareeq Al Retaj Real Estate Services
Main Contractor – Nass Contracting Company W.L.L
Cost Consultant – HAJ Quantity Surveyors Co. W.L.L
Engineering Consultant – Gulf House Engineering (GHE)
ID Consultant – International Design Associates (IDA)

Supply and Installation of entire joinery works including doors, wardrobes, vanities, ceiling, cladding, counters, flooring, wall paneling, etc.

The Avenues Bahrain Phase 2B

Main Contractor – Nass Contracting Company W.L.L
Consultant – Mohamed Salahuddin Consulting Engineering Bureau (MSCEB)

Supply and Installation of Doors



ON-GOING PROJECTS LIST

Golden Gate Towers at Bahrain Bay- Tower B

Client – Grnata Real Estate
Main Contractor – Grnata Contracting
Consultant – Arab Architects W.L.L.
ID Consultant – International Design Associates (IDA)

Supply and Installation of entire joinery works including doors, wardrobes, vanities, ceiling, cladding, counters, flooring, wall paneling, etc.

Four Seasons residences

Main Contractor – Nass Contracting Company W.L.L
Consultant – Mohamed Salahuddin Consulting Engineering Bureau (MSCEB)

Supply and Installation of White & Off- White Joinery Items

Bahrain Marina Development Phase 1

Main Contractor – Nass Contracting Company W.L.L
Consultant – Mohamed Salahuddin Consulting Engineering Bureau (MSCEB)
ID Consultant – Abeer Akbari & Associates

Supply and Installation of Doors and Joinery Works



TOGETHER
EVERYBODY
ACHIEVES
MORE



دار لتصميم الخشب ذ.م.م

DAR WOOD DESIGN W.L.L.

An ISO 9001 certified company



PO BOX 80470
HIDD, KINGDOM OF BAHRAIN



TEL. No: +973 39902030,
+973 17785320



Email: amit@aldarbh.com

